



INDOFINE Chemical Company, Inc.

121 Stryker Lane, Bldg. 30, Suite 1 • Hillsborough, NJ 08844 • U.S.A.

Phone: (908) 359-6778 • FAX: (908) 359-1179

website: www.indofinechemical.com

e-mail: chemical@indofinechemical.com

CERTIFICATE OF ANALYSIS

Catalog Number: D-108

Product Name: **ESCULETIN**
(Cichorigenin,6,7-Dihydroxycoumarin)

CAS Number: [305-01-1]

Lot Number: 0102017

Chemical Formula: C₉H₆O₄

Molecular Weight: 178.15

Melting Point: 270-273°C

Appearance: Pale yellow crystalline powder

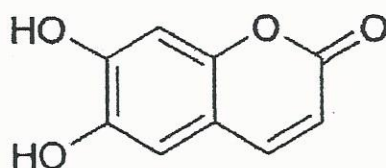
Solubility: Soluble in DMSO

TLC: Chloroform : Methanol (9:1)

NMR Spectrum: Enclosed (Confirms to the structure)

Storage: Store at +4°C

Purity (HPLC): 99.68%





INDOFINE Chemical Company, Inc.

121 Stryker Lane, Bldg. 30, Suite 1 • Hillsborough, NJ 08844 • U.S.A.

Phone: (908) 359-6778 • Fax: (908) 359-1179

Website: www.indofinechemical.com

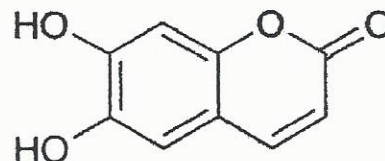
E-mail: chemical@indofinechemical.com

HPLC ANALYSIS

Acquired by : Sanjeev
 Sample Name : Esculetin(6,7-Dihydroxycoumarin)
 Sample ID : Lot No:-0102017
 Injection Volume : 20 uL
 Data Filename : 100413H.lcd
 Method Filename : Linear Gradient.M.lcm

Column : LUNA C-18(2), (250mmx4.6mm 5.0µ)
 Flow : 1.000 mL/min.
 Mobile Phase : A(0.05% TFA in water) B(Acetonitrile)

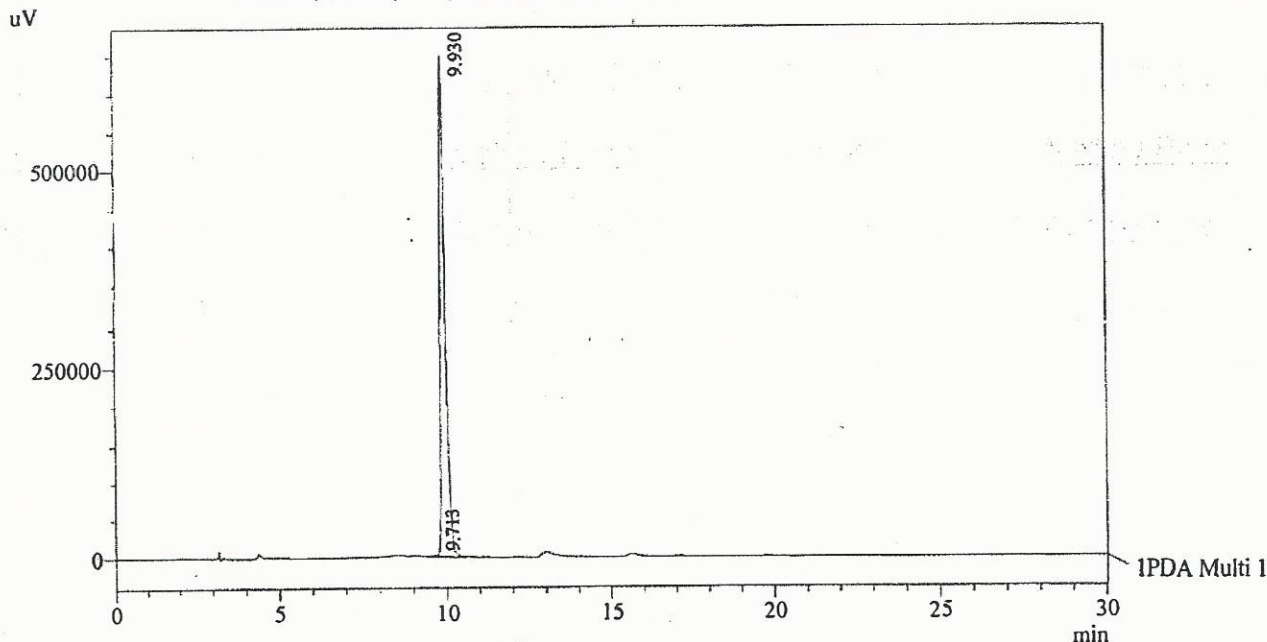
0.01	90	10
12.0	10	90
20.0	10	90
23.0	90	10
30.0	90	10



Catalog No.: D-108
 Product name: Esculetin
 Lot No.: 0102017

Diluent : Methanol

Chromatogram
 Esculetin(6,7-Dihydroxycoumarin) D:\promonence\lData



1 PDA Multi 1 / 254nm 4nm

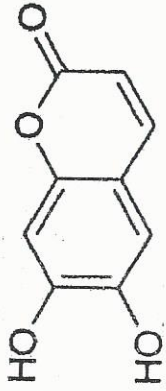
PeakTable

PDA Ch1 254nm 4nm

Peak#	Name	Ret. Time	Area	Area %	Relative Retention Time
1	RT:9.713	9.713	21007	0.32	0.98
2	Esculetin	9.930	6638706	99.68	1.00
Total			6659713	100.00	



INDOFINE Chemical Company, Inc.
 121 STRYKER LANE
 BLDG. 30, SUITE 1
 HILLSBOROUGH, NJ 08844

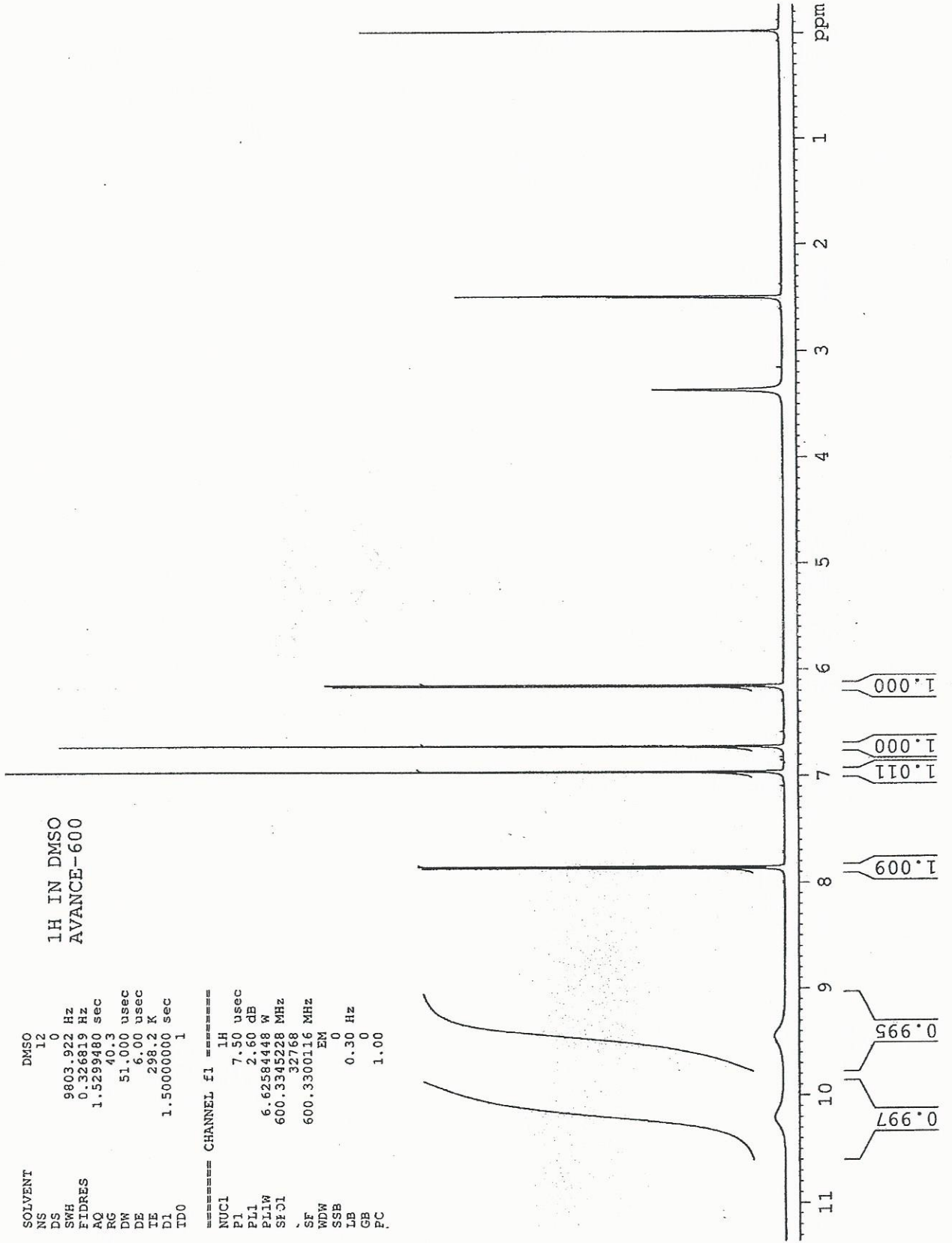


Catalog No.: D-108
 Product name: Esculetin
 Lot No.: 0102017

SOLVENT DMSO
 NS 12
 DS 0
 SWH 9603.922 Hz
 FIDRES 0.326819 Hz
 AQ 1.5299480 sec
 RG 40.3
 DW 51.000 usec
 DE 6.00 usec
 TE 298.2 K
 D1 1.50000000 sec
 ID0 1

1H IN DMSO
 AVANCE-600

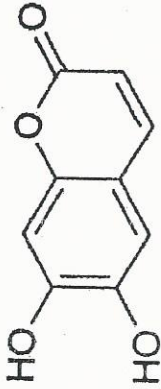
===== CHANNEL f1 =====
 NUCL 1H
 P1 7.50 usec
 PL1 2.60 dB
 PL1W 6.62584448 W
 SF01 600.3345228 MHZ
 32768
 SF 600.3300116 MHZ
 WDW EM
 SSB 0
 LB 0.30 Hz
 GB 0
 PC 1.00





INDOFINE Chemical Company, Inc.
 121 STRYKER LANE
 BLDG. 30, SUITE 1
 HILLSBOROUGH, NJ 08844

Catalog No.: D-108
 Product name: Esculetin
 Lot No.: 0102017



SOLVENT DMSO
 NS 12
 DS 0
 SWH 9803.922 Hz
 FIDRES 0.326819 Hz
 AQ 1.5299480 sec
 RG 40.3
 DW 51.000 usec
 DE 6.00 usec
 TE 298.2 K
 D1 1.5000000 sec
 TD0 1

1H IN DMSO
 AVANCE-600

===== CHANNEL f1 =====
 NUC1 1H
 P1 7.50 usec
 PL1 2.60 dB
 P1LW 6.62584448 W
 SF01 600.3345228 MHz
 SI 32768
 SF 600.3300116 MHz
 EM
 WDW 0
 SSB 0.30 Hz
 LB 0
 GB 0
 PC 1.00

